

Rural villages

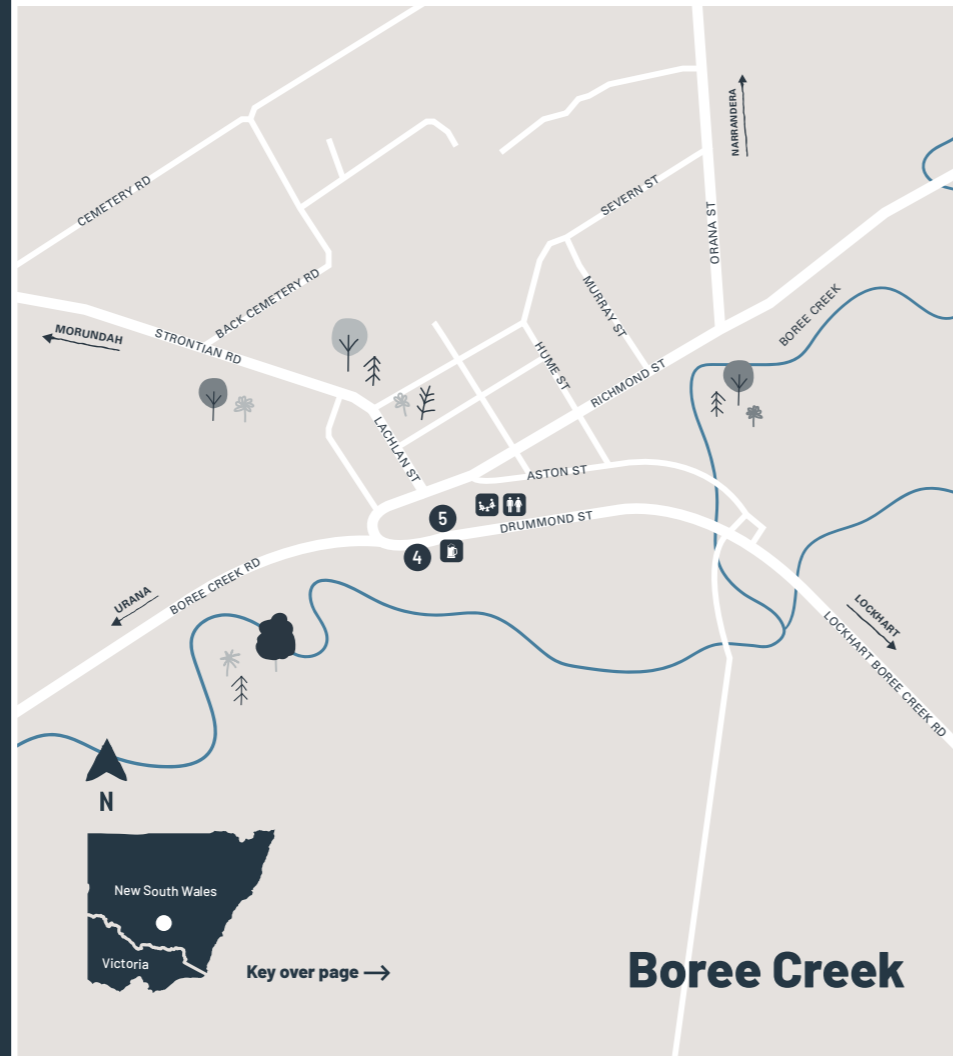
Travel at your own pace as you journey through the countryside and take in our beautiful landscapes.

Our villages may be small, but they make up for it with their rich history and country hospitality. Winding around real working farms, the tranquil environment of these townships will leave you feeling relaxed and rested. Travel at your own pace as you journey through the countryside and take in the beautiful landscape.

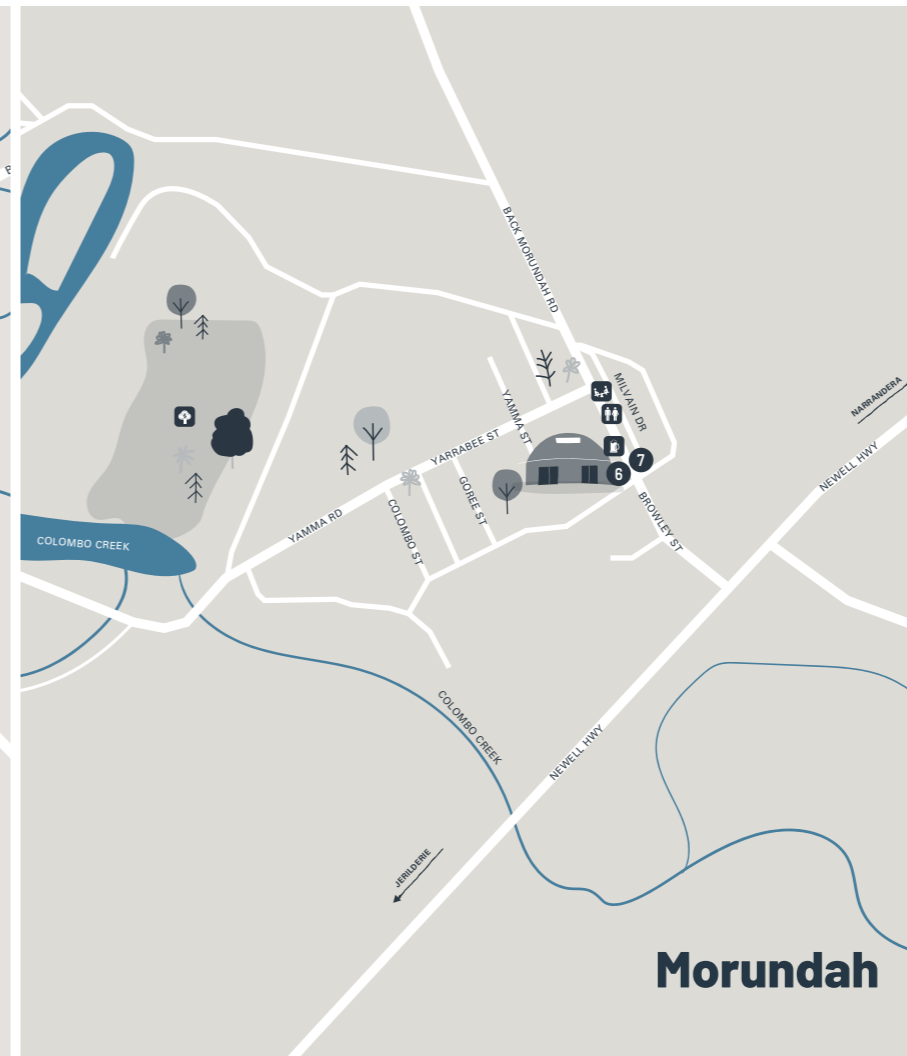
NORTH of
THE MURRAY



Oaklands



Boree Creek



Morundah

VISIT

- 1 OAKLANDS RSL CLUB
- 2 OAKLANDS VINTAGE MACHINERY MUSEUM
- 3 ORCHID IN A TEA CUP SCULPTURE
- 4 SWAGMAN & RUSTY SCULPTURE
- 5 TIM FISCHER MEMORIAL SCULPTURE
- 6 PARADISE PALLADIUM THEATRE
- 7 TOOLBOX HORSE SCULPTURE

EXPLORE THE REGION

Mulwala

Water based activities and golf are a focus in this bustling country town that also hums with festivals, events, markets and live shows throughout the year. Mulwala is renowned for the picturesque Lake Mulwala, waterfront accommodation and venues with spectacular views.

DISTANCE TO

Corowa	41km / 30 minutes
Howlong	68km / 50 minutes
Urana	93km / 1 hour

Corowa

The centre of the region and a great place to base yourself, Corowa is steeped in history. Close to land and water based activities as well as world class food, whisky and wine, Corowa offers big-town comforts, surrounded by nature, trails and birdlife on all sides.

DISTANCE TO

Howlong	28km / 20 minutes
Mulwala	41km / 30 minutes
Urana	82km / 55 minutes

Howlong

The secret gem of the region: golf, camping, parklands, history, and the Murray River - it's all here. Discover yesteryear along the Howlong History Trail or set up camp or a picnic along the idyllic riverbanks.

DISTANCE TO

Corowa	28km / 20 minutes
Mulwala	68km / 50 minutes
Urana	97km / 1 hour

Discover northofthemurray.com.au



Key over page →