



Toolbox and Jockey
Browley St, Morundah

A tribute to the local horse races held in Morundah for over 100 years drawing crowds from all over NSW the Toolbox and Jockey Sculpture features in the village park.



Last Train from Boree
Tim Fischer Park, Drummond St, Boree Creek

Across the road from the Boree Creek Hotel is the Tim Fischer Memorial Park, here you will find tribute to the man himself doing what he loved most... riding a steam train in his hometown.



Swagman and Rusty
Drummond St, Boree Creek

This scrap metal art work created by local scrap metal artist Andrew Whitehead, celebrates Boree Creeks centenary and pays tribute to the swaggers that once wandered this great land of ours.



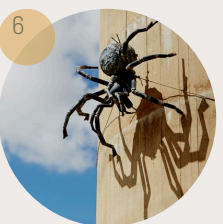
Savannah the Goanna
20 William St, Urana

One of local scrap metal artist Andrew Whitehead's beautiful sculptures. Savannah the Urana Goanna tested Andrew's skills when she needed fine tuning to sit on the rock outside the Urana Bowling & Community Club.



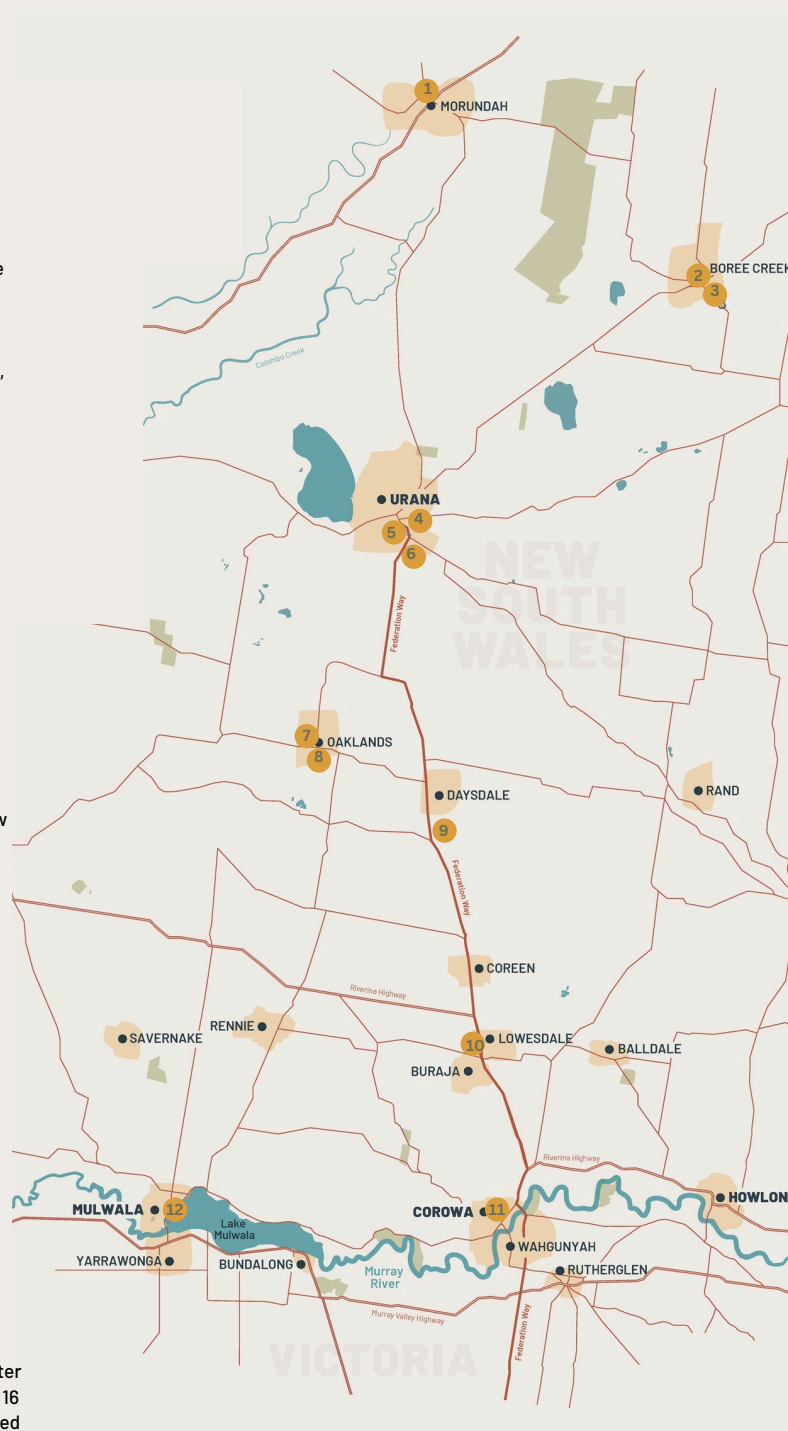
The Stockman and his Mob
Federation Way, Urana

Commissioned by local Urana families, the mob of sheep being herded towards water by two stockmen can be spotted driving into Urana.



Not so Itsy Spider
Federation Way, Urana

The world's second largest spider sculpture on the side of the Urana Water Tower. This giant redback spider sits 16 meters above the ground and is secured with 3 cables that leave it hanging in clear view as you drive by.



Orchid in a Tea Cup
12 Milthorpe St, Oaklands

This 1.5 meter tall sculpture of the Oaklands Orchid sitting in front of the Oaklands Community Centre was commissioned by the Oaklands Country Women's Association.



Peoplescape
Oaklands Vintage Machinery Museum, 10 Coreen St, Oaklands

To celebrate the Centenary of Federation, the people of Oaklands created the Oaklands Peoplescape metal artworks.



Hardworking Horse
Federation Way, Daysdale

The hardworking metal man and horse, created by locals Doug Monroe and Jimmy Hewson as a reminder that "Coming together as a community, brings people together."



Shearing the Ram
Riverina Highway, Lowesdale

Local scrap metal sculptor Andrew Whitehead, together with the children of the Lowesdale Primary School gathered metal cogs and bits and pieces from local family farms to create this amazing tribute to the legendary Tom Roberts and his artwork.



The Brolgas
222 Sanger St, Corowa

The Brolgas Sculptures have been watching over Corowa since 2005 when they found their home at the top of Sanger St to commemorate the 150 anniversary of Corowa.



King of the River
Digger Loughman Reserve, 126 Melbourne St, Mulwala

Set on the foreshore of the picturesque Lake Mulwala this scrap metal artwork by local artist Andrew Whitehead doubles as a bike rack.

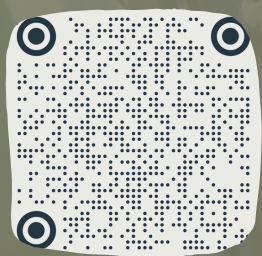
Our region is rich with wonderful experiences, from ancient Indigenous and colonial history to contemporary arts and cultural attractions.

Our largest towns of Mulwala, Corowa and Howlong run west to east along the northern bank of the Murray River.

We've mapped out our sculptures for you to start at any point, you might want to start early and be back in time for dinner, or perhaps spread it over a couple of days, and enjoy other highlights along the way.

However you plan it, keep an eye out for some surprising art. It could be just around the next bend...

Pick up a copy of the North of the Murray Mural Trail or scan the QR code to explore more
Art and Culture North of the Murray.



Start your journey at the
Corowa Visitor Information Centre

100 Edward Street Corowa NSW 2646

Phone (02) 6033 3221

tourism@federationcouncil.nsw.gov.au

Find us on Facebook and Instagram
[@northofthemurray](#) [#northofthemurray](#)

DISCLAIMER:

This document is to be used as a guide only. Federation Council makes no representation as to the accuracy or completeness of this information. Federation Council and their employees shall not be liable in any way for loss of any kind, including damages, costs, interest loss of profits or special loss or damage arising from any error, incompleteness or other defect in this information.

NORTH OF THE MURRAY
SCULPTURE TRAIL