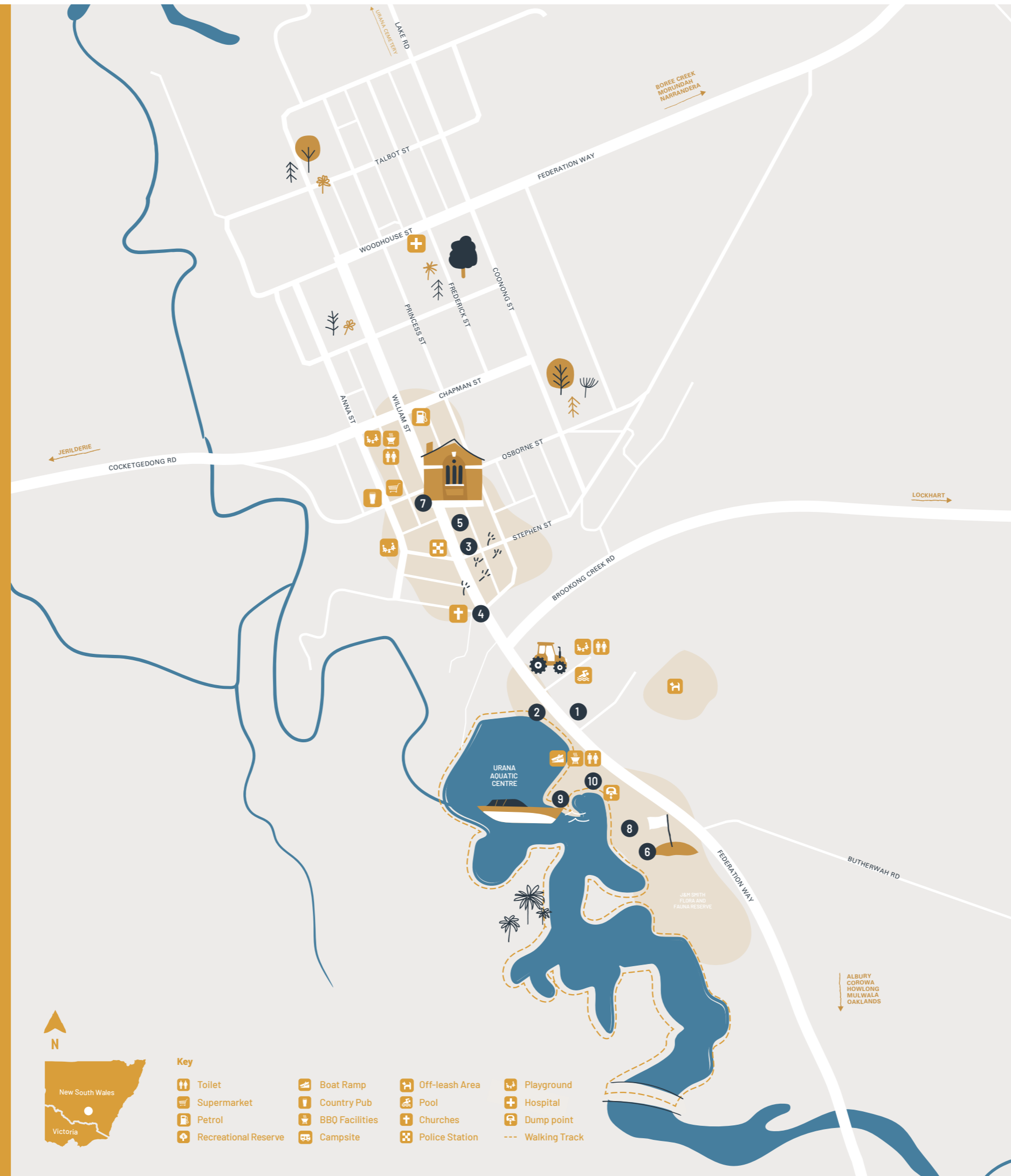


Urana

This small town is popular for watersports at the Urana Aquatic Centre, wide open roads and starry skies.

Bird watchers enjoy the Free Flight Bird Aviary, historians love the Urana Courthouse Museum while the sculptures such as Savannah the Urana Goanna and the Not so Itsy Spider in town keep the artists amused.



- Key**
- Toilet
 - Supermarket
 - Petrol
 - Recreational Reserve
 - Boat Ramp
 - Country Pub
 - BBQ Facilities
 - Campsite
 - Off-leash Area
 - Pool
 - Churches
 - Police Station
 - Playground
 - Hospital
 - Dump point
 - Walking Track

DISTANCE TO

| | |
|----------------|-------|
| Albury/Wodonga | 124km |
| Corowa | 82km |
| Howlong | 97km |
| Lockhart | 46km |
| Mulwala | 93km |
| Narrandera | 82km |

NORTH of THE MURRAY

VISIT

- 1 DEXTER HORIZONTAL WINDMILL
- 2 NOT SO ITSY SPIDER
- 3 SAVANNAH THE URANA GOANNA
- 4 STOCKMAN AND HIS MOB
- 5 URANA BOWLING CLUB
- 6 URANA COMMUNITY GOLF COURSE
- 7 URANA COURTHOUSE MUSEUM
- 8 URANA FREE FLIGHT AVIARY
- 9 WATERFRONT PAVILION

CARAVAN PARKS

- 10 URANA CARAVAN PARK
FEDERATION WAY, URANA | (02) 6920 8192

More information.

Visit us for maps, accommodation & inspiration.

Corowa Visitor Information Centre
100 Edward Street Corowa NSW 2646
Phone (02) 6033 3221
Free call 1800 814 054
tourism@federationcouncil.nsw.gov.au

Yarrowonga Mulwala Visitor Information Centre
Irvine St Yarrowonga VIC 3730
Phone (03) 5744 1989
tourism@yarrowongamulwala.com.au

Howlong Council Office & Library
59 Hawkins St Howlong NSW 2643
Phone (02) 6026 5055

Urana Council Office
30-32 William St Urana NSW 2645
Phone (02) 6930 9100

Share your experience

#Northofthemurray #Corowa #Mulwala
#Howlong #Urana @northofthemurray

Discover northofthemurray.com.au

Rural villages

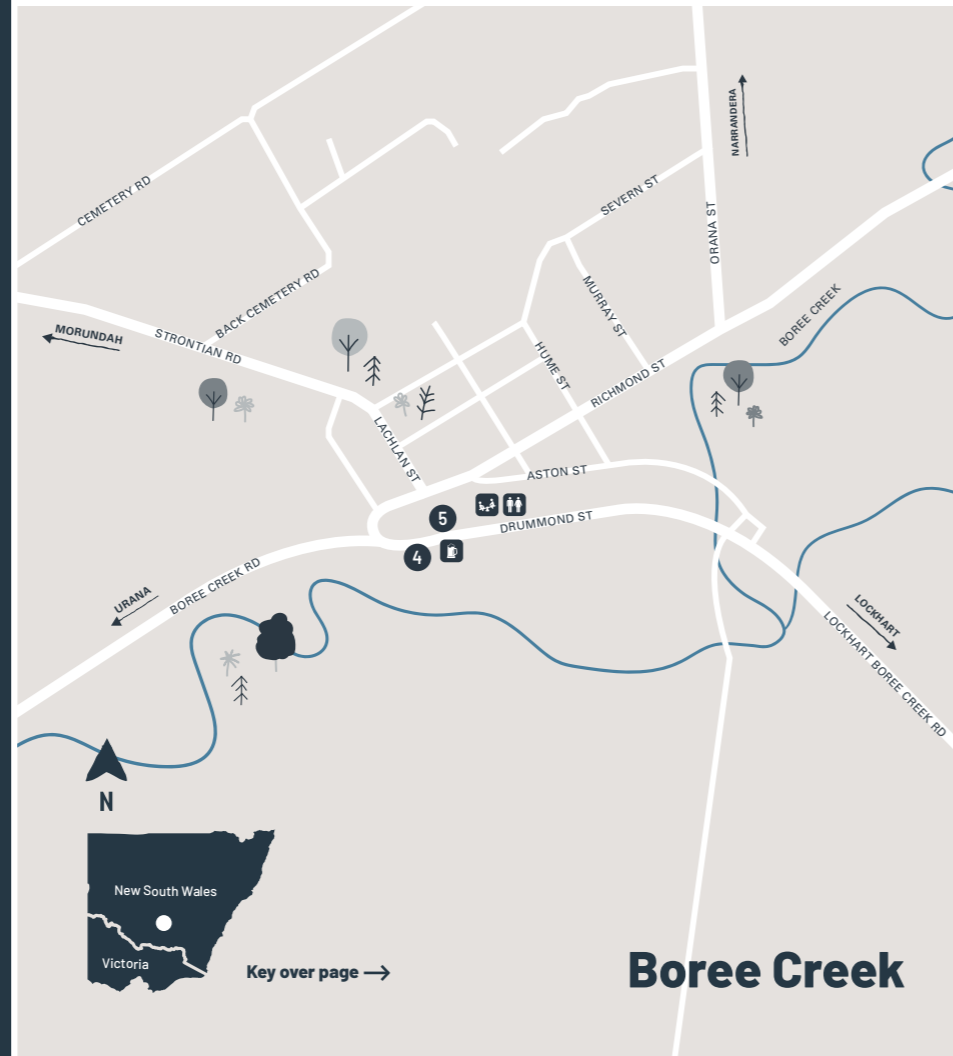
Travel at your own pace as you journey through the countryside and take in our beautiful landscapes.

Our villages may be small, but they make up for it with their rich history and country hospitality. Winding around real working farms, the tranquil environment of these townships will leave you feeling relaxed and rested. Travel at your own pace as you journey through the countryside and take in the beautiful landscape.

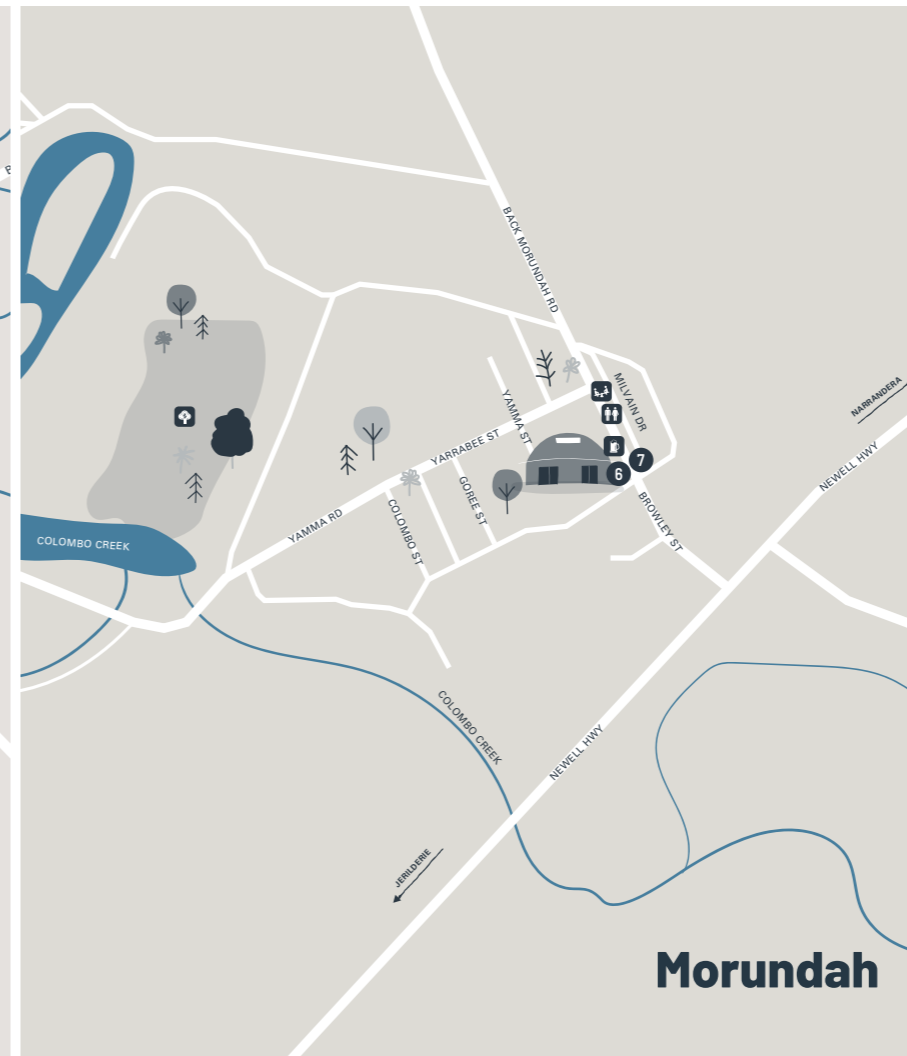
NORTH of
THE MURRAY



Oaklands



Boree Creek



Morundah



Key over page →

VISIT

- 1 OAKLANDS RSL CLUB
- 2 OAKLANDS VINTAGE MACHINERY MUSEUM
- 3 ORCHID IN A TEA CUP SCULPTURE
- 4 SWAGMAN & RUSTY SCULPTURE
- 5 TIM FISCHER MEMORIAL SCULPTURE
- 6 PARADISE PALLADIUM THEATRE
- 7 TOOLBOX HORSE SCULPTURE

EXPLORE THE REGION

Mulwala

Water based activities and golf are a focus in this bustling country town that also hums with festivals, events, markets and live shows throughout the year. Mulwala is renowned for the picturesque Lake Mulwala, waterfront accommodation and venues with spectacular views.

DISTANCE TO

| | |
|---------|-------------------|
| Corowa | 41km / 30 minutes |
| Howlong | 68km / 50 minutes |
| Urana | 93km / 1 hour |

Corowa

The centre of the region and a great place to base yourself, Corowa is steeped in history. Close to land and water based activities as well as world class food, whisky and wine, Corowa offers big-town comforts, surrounded by nature, trails and birdlife on all sides.

DISTANCE TO

| | |
|---------|-------------------|
| Howlong | 28km / 20 minutes |
| Mulwala | 41km / 30 minutes |
| Urana | 82km / 55 minutes |

Howlong

The secret gem of the region: golf, camping, parklands, history, and the Murray River - it's all here. Discover yesteryear along the Howlong History Trail or set up camp or a picnic along the idyllic riverbanks.

DISTANCE TO

| | |
|---------|-------------------|
| Corowa | 28km / 20 minutes |
| Mulwala | 68km / 50 minutes |
| Urana | 97km / 1 hour |

Discover northofthemurray.com.au